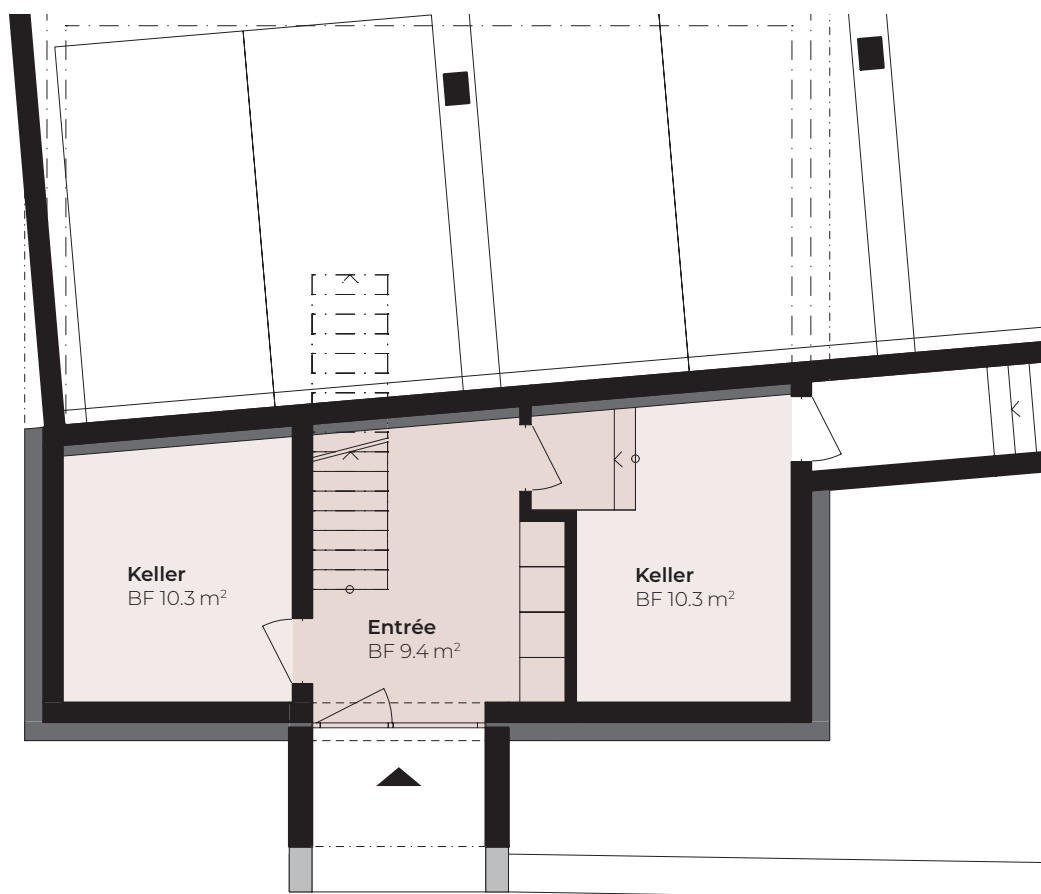
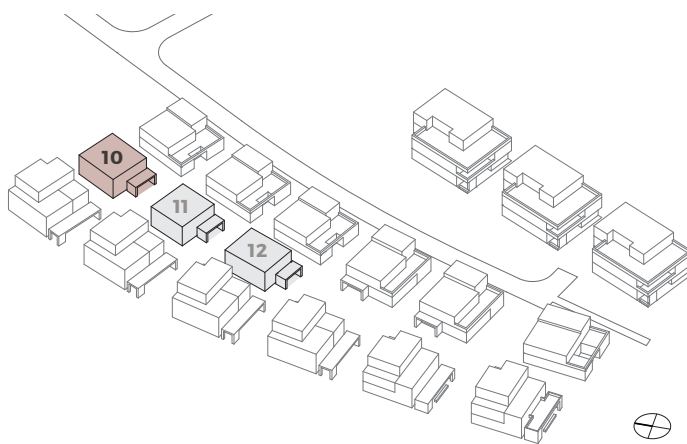


# HAUS 10

## EINGANGSGESCHOSS

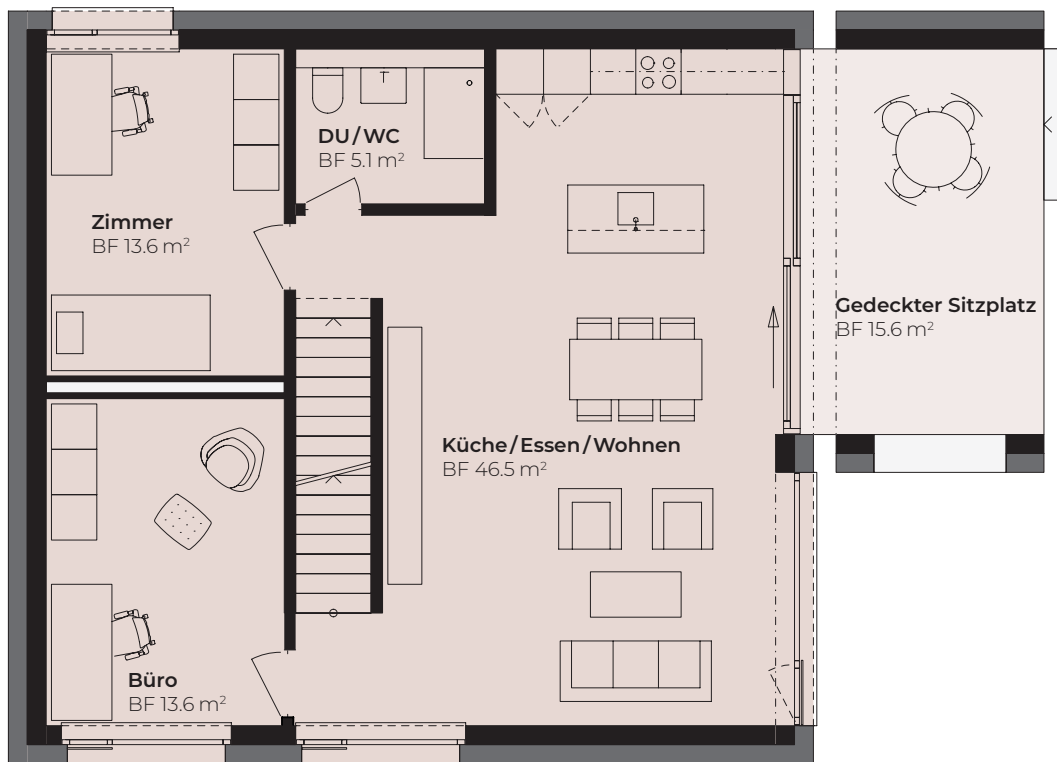
### 6.5-Zimmer Einfamilienhaus

Bruttowohnfläche ca. 181 m<sup>2</sup>  
Aussenfläche ca. 16 m<sup>2</sup>  
Garten ca. 217 m<sup>2</sup>



# HAUS 10

## ERDGESCHOSS



# HAUS 10

## OBERGESCHOSS

